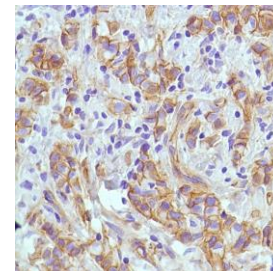




## Rabbit Anti-Human p13KCA Monoclonal Antibody (Clone SP139)

<b>CATALOG #:</b>	<b>M4390</b> 0.1 ml rabbit monoclonal antibody purified by protein A/G in PBS/1% BSA buffer pH 7.6 with less than 0.1% sodium azide.
	<b>M4392</b> 0.5 ml rabbit monoclonal antibody purified by protein A/G in PBS/1% BSA buffer pH 7.6 with less than 0.1% sodium azide.
	<b>M4394</b> 1.0 ml rabbit monoclonal antibody purified by protein A/G in PBS/1% BSA buffer pH 7.6 with less than 0.1% sodium azide.
	<b>M4391</b> 7.0 ml pre-diluted rabbit monoclonal antibody purified by protein A/G in TBS/1% BSA buffer pH 7.6 with less than 0.1% sodium azide.



*Human breast carcinoma stained with anti-p13KCA antibody*

<b>INTENDED USE:</b>	For Research Use Only. Not for use in diagnostic procedures.
<b>CLONE:</b>	SP139
<b>IMMUNOGEN:</b>	Synthetic peptide in the internal region of the human p13KCA protein.
<b>IG ISOTYPE:</b>	Rabbit IgG
<b>EPITOPE:</b>	Not determined
<b>MOLECULAR WEIGHT:</b>	110-124 kDa
<b>SPECIES REACTIVITY:</b>	Human (tested). (See <a href="http://www.springbio.com">www.springbio.com</a> for information on species reactivity predicted by sequence homology.)
<b>DESCRIPTION:</b>	Phosphatidylinositol-4, 5-bisphosphate 3-kinase catalytic subunit alpha isoform (PI3KCA) is encoded by the PIK3CA oncogene and catalyzes the production of phosphatidylinositol-3, 4, 5-triphosphate (PIP3). PIP3 activates downstream signaling components such as protein kinase AKT and promotes cell growth and survival. The PIK3CA oncogene is one of the two most frequently mutated oncogenes in human cancer. PI3KCA mutations are associated with colorectal cancer, breast cancer, ovarian cancer, endometrial carcinoma and hepatocellular carcinoma.
<b>APPLICATIONS:</b>	Immunohistochemistry (IHC)
<b>IHC PROCEDURE:</b>	<b>Specimen Preparation:</b> Formalin-fixed, paraffin-embedded tissues are suitable for use with this primary antibody. <b>Deparaffinization:</b> Deparaffinize slides using xylene or xylene alternative and graded alcohols. <b>Antibody Dilution:</b> If using the concentrate format of this product, dilute the antibody 1:100. The dilutions are estimates; actual results may differ because of variability in methods and protocols. <b>Antigen Retrieval:</b> Boil tissue section in 1mM EDTA buffer, pH 8.0 for 10 min followed by cooling at room temperature for 20 min. <b>Primary Antibody Incubation:</b> Incubate for 10 minutes at room temperature. <b>Slide Washing:</b> Slides must be washed in between steps. Rinse slides with PBS/0.05% Tween. <b>Visualization:</b> Detect the antibody as instructed by the instructions provided with the visualization system.
<b>IHC POSITIVE CONTROL:</b>	Breast carcinoma
<b>CELLULAR LOCALIZATION:</b>	Membrane
<b>STORAGE &amp; STABILITY:</b>	Store at 2-8°C. Do not freeze. The user must validate any other storage conditions. When properly stored, the reagent is stable to the date indicated on the label. Do not use the reagent beyond the expiration date. There are no definitive signs to indicate instability of this product; therefore, positive and negative controls should be tested simultaneously with unknown specimens. If unexpected results are observed which cannot be explained by variations in laboratory procedures and a problem with the reagent is suspected, contact Technical Support at <a href="mailto:spring.tech@ventana.roche.com">spring.tech@ventana.roche.com</a> .
<b>WARNINGS &amp; PRECAUTIONS:</b>	<ol style="list-style-type: none"><li>1. Avoid contact of reagents with eyes and mucous membranes. If reagents come into contact with sensitive areas, wash with copious amounts of water.</li><li>2. This product is harmful if swallowed.</li><li>3. Consult local or state authorities with regard to recommended method of disposal.</li><li>4. Avoid microbial contamination of reagents.</li></ol>